

RoHS
COMPLIANT


SPECIFICATIONS

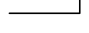
1. Current rating: 9A AC, DC
2. Voltage rating: 600V AC,DC
3. Temperature range: -40°C ~ +105°C
4. Insulation resistance: 1000MΩ Min.
5. Withstanding voltage: 1500V AC/ minute.
6. Contact resistance: 10mΩ Max.

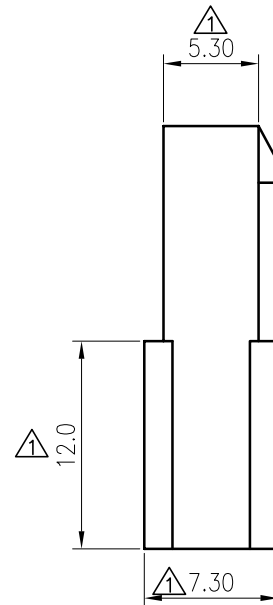
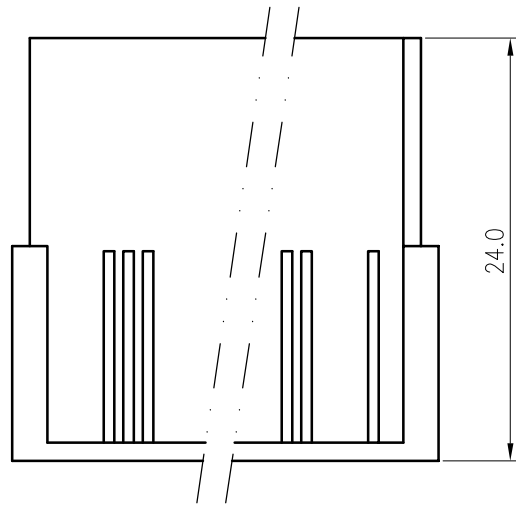
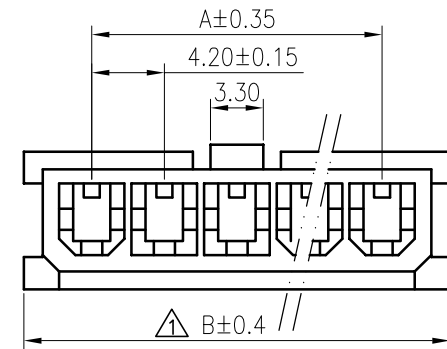
Material: PA66 UL 94V-2
Suitable KR4200 series terminal
Mate with KR4200 series wafer

Ordering Code:

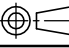
H4200F *** 16 02A

No.of Circuits 
102:2,106:6

Insulator Material 
16:PA66 Transparent V2



Circuits	Dimensions	
	A	B
2	4.20	11.70
3	8.40	15.90
4	12.60	20.10
5	16.80	24.30
6	21.00	28.50

MARK	REVISION	DESCRIPTION	SIGNATURE	DATE	TOLERANCE	TITLE:	DRAWN:	CHECKED:	APPROVED:	REV. :	DRAWING NO. :
A4					X. X ± 0.30	MK4.2 Single Row Female Housing Without wings	Liujingtian 2020.5.22				PART NO. : H4200F***1602A DRAWING NO. : 4200HF102-A-S
A3	1	Uniformly arrange the drawings	ZSZ	2022.01.16	X. XX ± 0.20						
A2	2	Change the part number and frame format	LJT	2020.05.22	X. XXX ± 0.10						
					Angle ± 2°						
	1					UNIT: mm	SCALE: N/A	SHEET: 1/1	PROJECTION 		

KONNRA 东莞市康瑞电子有限公司

DongGuan Konnra Electronics Co., Ltd.