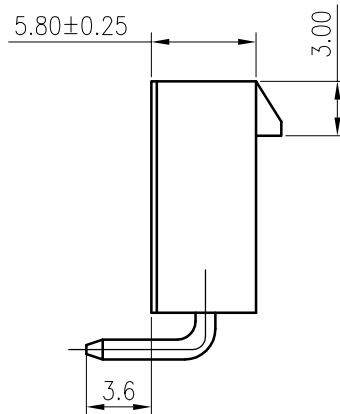
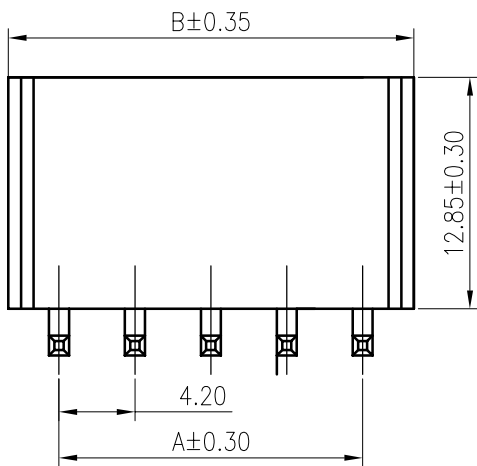
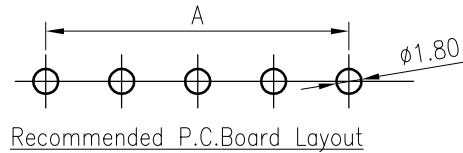
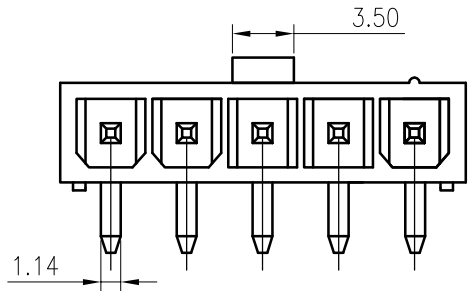


RoHS
COMPLIANT



SPECIFICATIONS

1. Current rating: 9A(2P AWG#16) AC, DC
2. Voltage rating:600V AC,DC
3. Temperature range: -40°C ~ +105°C
4. Insulation resistance: 1000M Ω / min.
5. Withstanding voltage: 1500V AC/ minute.
6. Contact resistance: 10m Ω / max.

Material:

Insulator: Nylon 66 UL 94V-2

Contact: Brass

Plating: Tin plated over Nickel

Mate with KR4200 series double row male housing

Ordering Code:

C4200RD *** 16 T0101 * C

No. of Circuits
102:2,106:6

Packing
P:Bag
B:Box

Insulator Material

16:PA66 Transparent V2

Circuits	Dimensions	
	A	B
2	4.20	9.60
3	8.40	13.80
4	12.60	18.00
5	16.80	22.20
6	21.00	26.40

MARK	REVISION	DESCRIPTION	SIGNATURE	DATE
A4				
A3		Uniformly arrange the drawings	ZSZ	2022.01.16
A2		Change the part number and frame format	LJT	2020.05.23

TOLERANCE		TITLE: MX4.2 DIP Single Row 90° Wafer Solid needle without post
X. X	± 0.30	
X. XX	± 0.20	
X. XXX	± 0.10	
Angle $\pm 2^\circ$		UNIT: mm SCALE: N/A

DRAWN: Liujingtian 2020.5.22	
CHECKED:	
APPROVED:	
SHEET: 1/1	PROJECTION

KONNRA 东莞市康瑞电子有限公司 DongGuan Konnra Electronics Co., Ltd.	
PART NO. : C4200RD***16T0101*C	
REV. : A3	DRAWING NO. : 4200WRD101-C-S