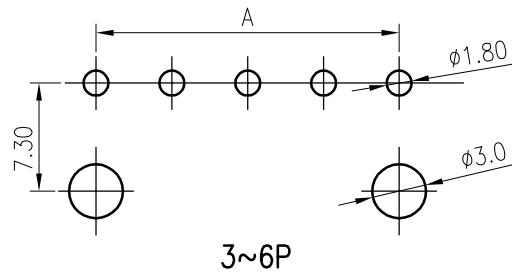
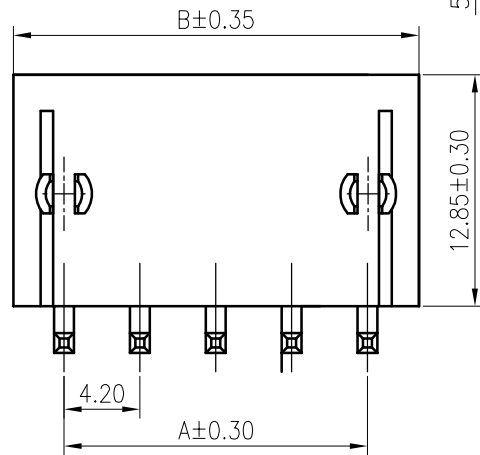
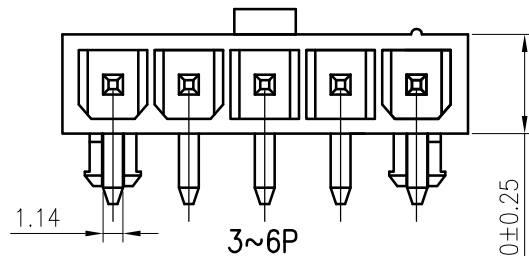
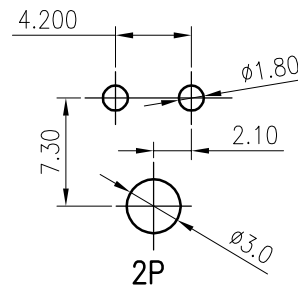
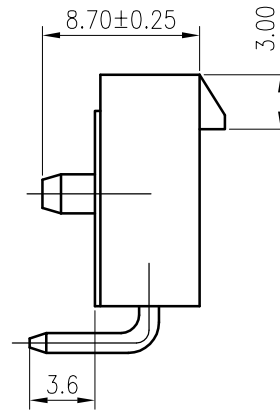
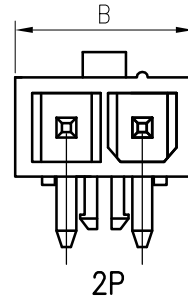


RoHS  
COMPLIANT



Recommended P.C.B. Layout  
Total tolerance:±0.05mm



Recommended P.C.B. Layout  
Total tolerance:±0.05mm

**SPECIFICATIONS**

1. Current rating: 9A(2P AWG#16) AC, DC
2. Voltage rating:600V AC,DC
3. Temperature range: -40°C ~ +105°C
4. Insulation resistance: 1000MΩ/ min.
5. Withstanding voltage: 1500V AC/ minute.
6. Contact resistance: 10mΩ/ max.

**Material:**

Insulator: Nylon 66 UL94 V-2 or V-0  
Contact: Brass  
Plating: Tin plated over Nickel  
Mate with KR4200 series single row female housing

**Ordering Code:**

C4200RD \*\*\* \*\* T0102 \* C  
No. of Circuits } } Packing  
102:2,106:6 } } P:Bag  
Insulator Material } } B:Box  
01:PA66 White V0  
02:PA66 Black V0  
16:PA66 Transparent V2

Circuits	Dimensions	
	A	B
2	4.20	9.60
3	8.40	13.80
4	12.60	18.00
5	16.80	22.20
6	21.00	26.40

F					<b>TOLERANCE</b> X. X ± 0.30 X. XX ± 0.20 X. XXX ± 0.10 Angle ± 2°	<b>TITLE:</b> MX4.2 Single Row 90°Wafer solid needle with post	DRAWN: Arvin 2020.04.27		KONNRA 东莞市康瑞电子有限公司		
		Uniformly arrange the drawings	ZSZ	2022.01.16			CHECKED:		DongGuan Konnra Electronics Co., Ltd.		
		Change the part number and frame format	Arvin	2020.04.27			APPROVED:		PART NO. : C4200RD***16T0102*C		
	<b>MARK</b>	<b>REVISION DESCRIPTION</b>	<b>SIGNATURE</b>	<b>DATE</b>			<b>UNIT: mm</b>	<b>SCALE: N/A</b>	<b>SHEET: 1/1</b>	<b>PROJECTION</b>	<b>REV. : A3</b>
	1	2	3	4	5	6	7	8	9		