

RoHS
COMPLIANT

SPECIFICATIONS

1. Current rating: 3A AC, DC
2. Voltage rating: 250V AC,DC
3. Temperature range: -40°C ~ +105°C
4. Insulation resistance: 1000MΩ Min.
5. Withstanding voltage: 1500V AC/ minute.
6. Contact resistance: 20mΩ Max.

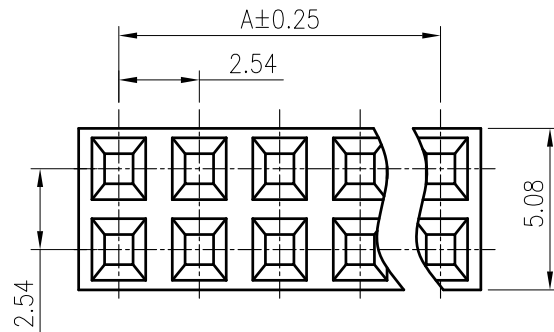
Material: PPO UL 94V-0
 Suitable KR2542 series terminal
 Mate with KR2542 series wafer

Ordering Code:

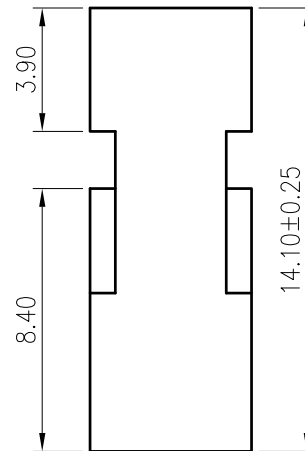
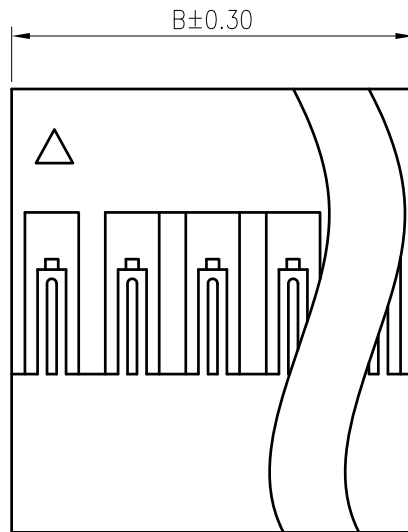
H25420 *** 06 01C

No.of Circuits 2
 202:2*2,210:2*10

Insulator Material 06:PPO Black V0

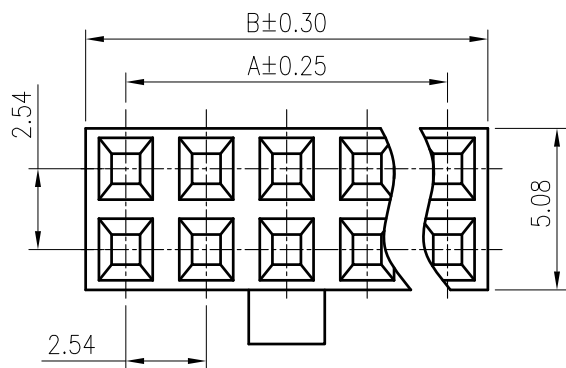


$A=2.54 \times (\text{Circuits}-1)$
 $B=A+2.54$

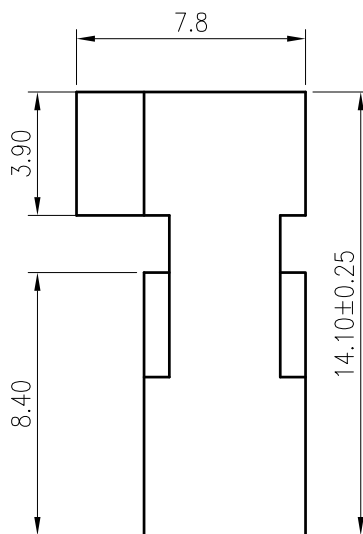
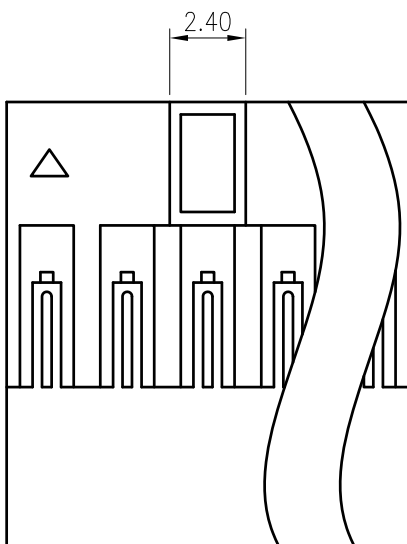


F					TOLERANCE	TITLE: DP2.54 Dual Row Housing	DRAWN: Liujingtian 2020.5.25		KONNRA 东莞市康瑞电子有限公司			
					X.X ±0.30		CHECKED:	DongGuan Konnra Electronics Co.,Ltd.				
		Uniformly arrange the drawings	LJT	2020.05.25	X.XX ±0.20		APPROVED:	PART NO.: H25420***0601C				
	MARK	REVISION DESCRIPTION	SIGNATURE	DATE	X.XXX ±0.10	UNIT:mm	SCALE:N/A	SHEET:1/1	PROJECTION	REV.:A2	DRAWING NO.: 2542H201-C-S	
	1	2	3	4	Angle ±2°						8	9

RoHS
COMPLIANT



$A=2.54 \times (\text{Circuits}-1)$
 $B=A+2.54$



SPECIFICATIONS

1. Current rating: 3A AC, DC
2. Voltage rating: 250V AC,DC
3. Temperature range: -40°C ~ +105°C
4. Insulation resistance: 1000MΩ Min.
5. Withstanding voltage: 1500V AC/ minute.
6. Contact resistance: 20mΩ Max.

Material: PPO UL 94V-0
Suitable KR2542 series terminal
Mate with KR2542 series wafer

Ordering Code:

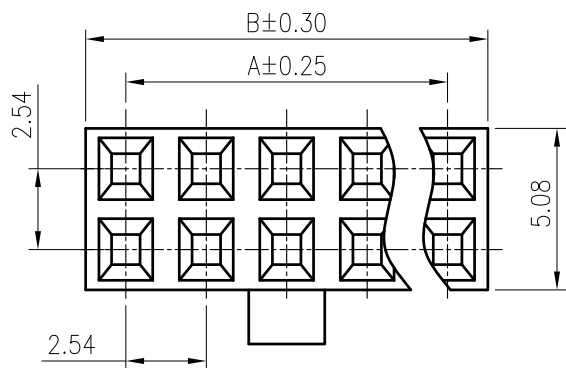
H25420 *** 06 02C

No.of Circuits ————
202:2*2,210:2*10

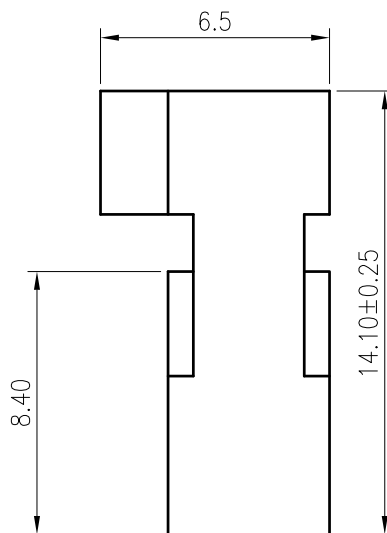
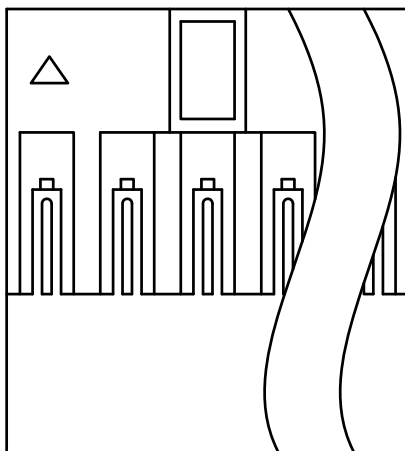
Insulator Material ————
06:PPO Black V0

F					TOLERANCE	TITLE:	DRAWN: Liujingtian 2020.5.25	KONNRA 东莞市康瑞电子有限公司					
					X.X ±0.30	DP2.54 Dual Row	CHECKED:	DongGuan Konnra Electronics Co.,Ltd.					
		Uniformly arrange the drawings	LJT	2020.05.25	X.XX ±0.20	High convexity	APPROVED:	PART NO.: H25420***0602C					
	MARK	REVISION DESCRIPTION	SIGNATURE	DATE	X.XXX ±0.10	Housing	UNIT:mm	SCALE:N/A	SHEET:1/1	PROJECTION	REV.:A2	DRAWING NO.: 2542H202-C-S	
	1	2	3	4	Angle ±2°							8	9

RoHS
COMPLIANT



$A=2.54 \times (\text{Circuits}-1)$
 $B=A+2.54$



SPECIFICATIONS

1. Current rating: 3A AC, DC
2. Voltage rating: 250V AC,DC
3. Temperature range: -40°C ~ +105°C
4. Insulation resistance: 1000MΩ Min.
5. Withstanding voltage: 1500V AC/ minute.
6. Contact resistance: 20mΩ Max.

Material: PPO UL 94V-0
Suitable KR2542 series terminal
Mate with KR2542 series wafer

Ordering Code:

H25420 *** 06 03C

No. of Circuits 2
202:2*2,210:2*10

Insulator Material 06:PPO Black V0



Uniformly arrange the drawings

LJT

2020.05.25

TOLERANCE
X.X ±0.30
X.XX ±0.20
X.XXX ±0.10
Angle ±2°

TITLE:
DP2.54 Dual Row
Low convexity
Housing

DRAWN: Liujingtian 2020.5.25

CHECKED:

APPROVED:

KONNRA 东莞市康瑞电子有限公司
DongGuan Konnra Electronics Co.,Ltd.

PART NO.: H25420***0603C

MARK

REVISION DESCRIPTION

SIGNATURE

DATE

UNIT:mm SCALE:N/A

SHEET: 1/1

PROJECTION

REV.: A2

DRAWING NO.: 2542H203-C-S

1

2

3

4

5

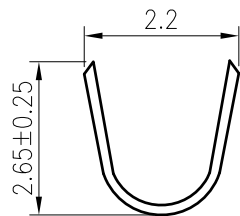
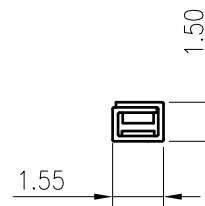
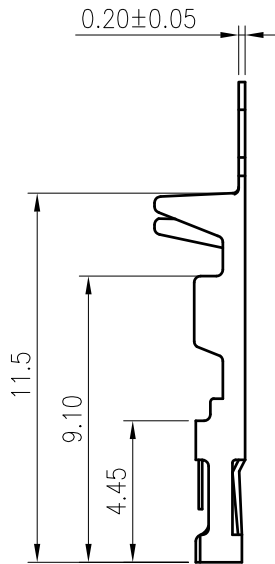
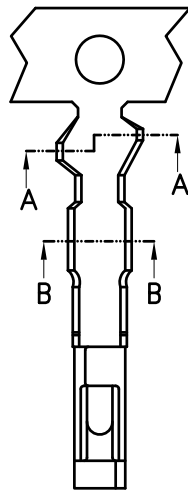
6

7

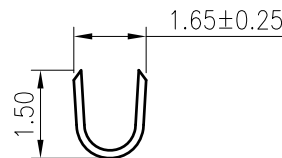
8

9

RoHS
COMPLIANT



A-A SECTION



B-B SECTION

SPECIFICATIONS

1. Current rating: 3A AC, DC
2. Voltage rating: 250V AC,DC
3. Temperature range: -40°C ~ +105°C
4. Insulation resistance: 1000MΩ Min.
5. Withstanding voltage: 1500V AC/ minute.
6. Contact resistance: 20mΩ Max.

Applicable Wires:

AWG#22~#28

Insulation O.D. : 1.70mm MAX

Material: Brass

Plating: Tin plated over nickel

Selective gold flsh over nickel

Suitable KR2542 series housing

Q'ty/reel: 10,000 PCS

Ordering Code:

T2542FB *** 02A

Plating
T01: Tin plated

B01: Selective gold flsh



MARK	REVISION DESCRIPTION	SIGNATURE	DATE
	Uniformly arrange the drawings	LJT	2020.05.25

TOLERANCE
X.X ±0.30
X.XX ±0.20
X.XXX ±0.10
Angle ±2°

TITLE:
DP2.54 Male
Terminal

UNIT:mm SCALE:N/A

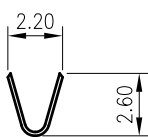
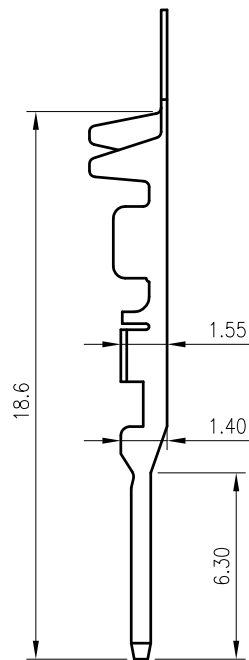
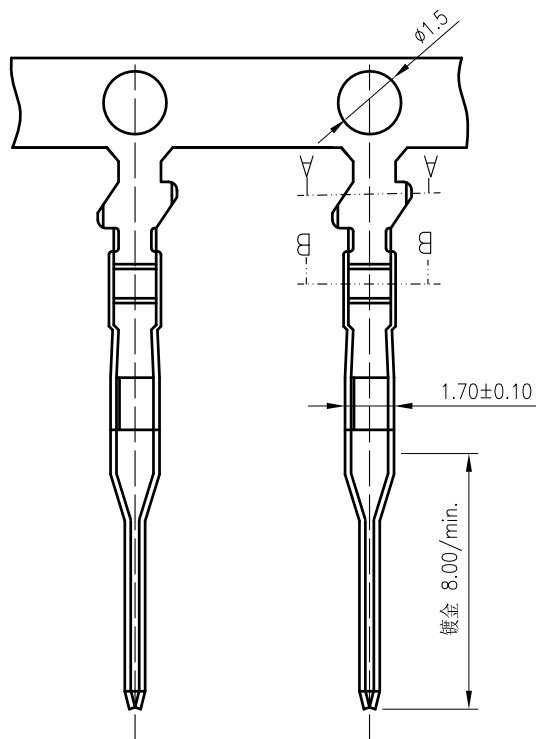
DRAWN: Liujingtian 2020.5.25
CHECKED:
APPROVED:
SHEET: 1/1

PROJECTION

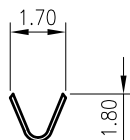
KONNRA 东莞市康瑞电子有限公司	
DongGuan Konnra Electronics Co.,Ltd.	
PART NO.: T2542FB***02A	

REV.: A2 DRAWING NO.: 2542TF101-A-S

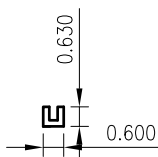
RoHS
COMPLIANT



SECTION A-A



SECTION B-B



SPECIFICATIONS

1. Current rating: 3A AC, DC
2. Voltage rating: 250V AC,DC
3. Temperature range: -40°C ~ +105°C
4. Insulation resistance: 1000MΩ Min.
5. Withstanding voltage: 1500V AC/ minute.
6. Contact resistance: 20mΩ Max.

Applicable Wires:

AWG#22~#28

Insulation O.D. : 1.70mm MAX

Material: Brass

Plating: Tin plated over nickel

Selective gold flash over nickel

Suitable KR2542 series housing

Q'ty/reel: 10,000 PCS



MARK

1

2

3

4

5

6

7

8

9

TOLERANCE

X.X ±0.30

X.XX ±0.20

X.XXX ±0.10

Angle ±2°

TITLE:
DP2.54 Male
Terminal

UNIT:mm

SCALE:N/A

DRAWN: Arvin 2020.03.05

CHECKED:

APPROVED:

SHEET:1/1

PROJECTION

KONNRA 东莞市康瑞电子有限公司

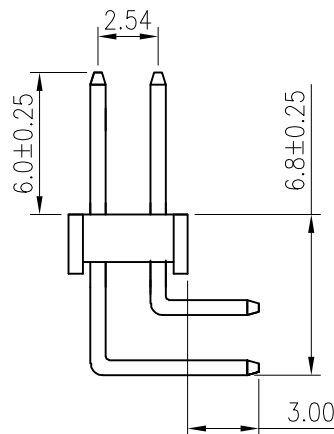
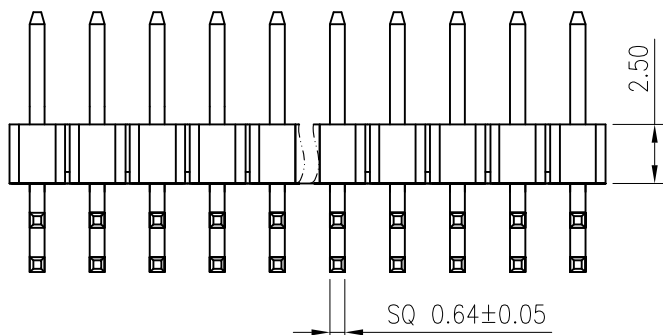
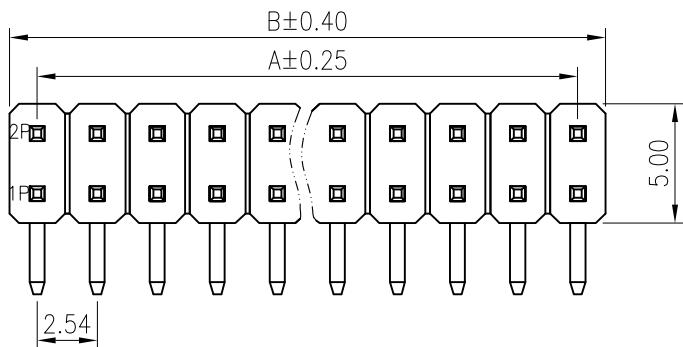
DongGuan Konnra Electronics Co.,Ltd.

PART NO.:T2542MBB0101C

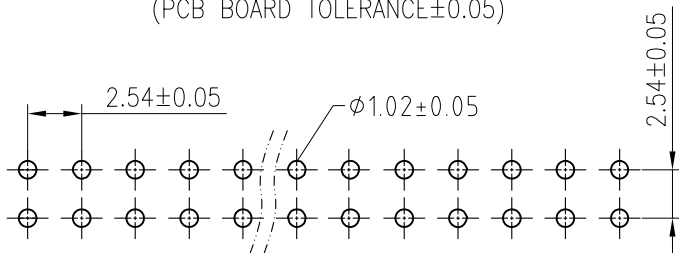
REV.:A2

DRAWING NO.:2542TM101-C-S

RoHS
COMPLIANT



Recommended P.C.B. Layout(Top Side)
(PCB BOARD TOLERANCE±0.05)



PCB LAYOUT

SPECIFICATIONS

1. Current rating: 3A AC, DC
2. Voltage rating: 250V AC, DC
3. Temperature range: -40°C ~ +105°C
4. Insulation resistance: 1000MΩ/ min.
5. Withstanding voltage: 1000V AC/ minute.
6. Contact resistance: 20mΩ/ max.

Material:

- Insulator: PA6T UL 94V-0
- Contact: Brass
- Plating: Gold flash plated over Nickel
- Circuits: 2x2~2x40
- Mate with KR2542 series housing or female header

Ordering Code:

C2542RD *** ** G01 03PC
 No. of Circuits } } Plating
 202:2x2,240:2x40 } } G01:Gold flash
 Insulator Material } }
 10:PA6T Black

A=2.54X(circuits/2-1)
 B=A+2.54

TOLERANCE
X.X ±0.30
X.XX ±0.20
X.XXX ±0.10
Angle ±2°

TITLE:
 DP2.54 DIP 90° Pin
 Header 2X30P H2.54/
 L6.0/D3.0

DRAWN: *Arwin 2021.09.08*
 CHECKED:
 APPROVED:

KONNRA 东莞市康瑞电子有限公司
 DongGuan Konnra Electronics Co.,Ltd.

PART NO.: C2542RD23010G0103PC

MARK	REVISION DESCRIPTION	SIGNATURE	DATE	UNIT:mm	SCALE:N/A	SHEET:1/1	PROJECTION	REV.:A1	DRAWING NO.:2542WMRD203-C-S
------	----------------------	-----------	------	---------	-----------	-----------	------------	---------	-----------------------------