

RoHS
COMPLIANT

SPECIFICATIONS

1. Current rating: 3A AC, DC
2. Voltage rating: 250V AC, DC
3. Temperature range: -40°C ~ +105°C
4. Insulation resistance: 1000MΩ/ min.
5. Withstanding voltage: 800V AC/ minute.
6. Contact resistance: 20mΩ/ max.

Material: PA66 UL94V-0

Circuits: 2~15

Suitable: KR2014 series terminal

Mate with KR2014 series wafer

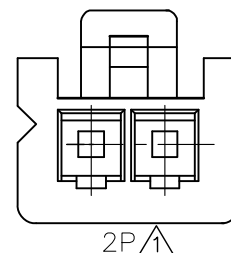
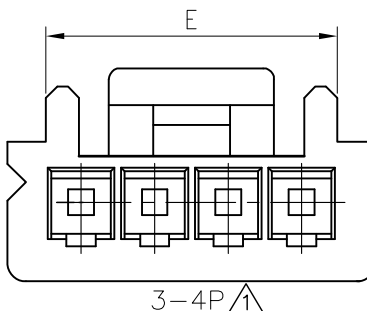
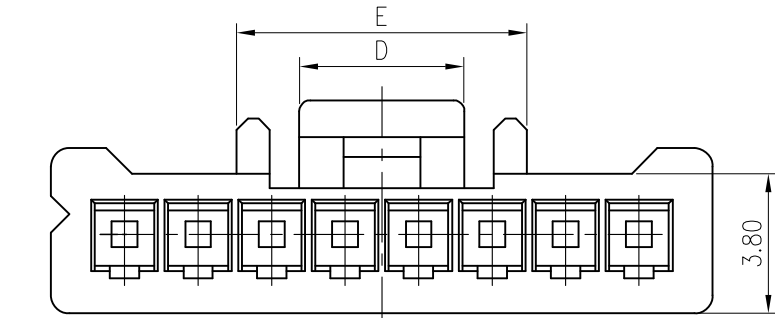
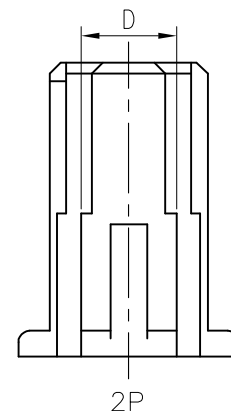
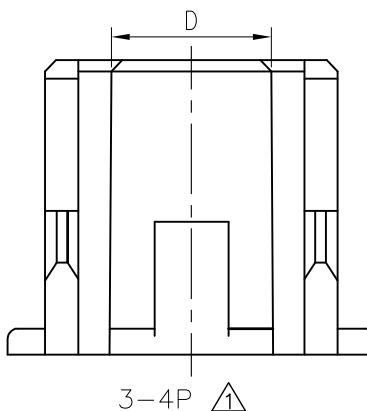
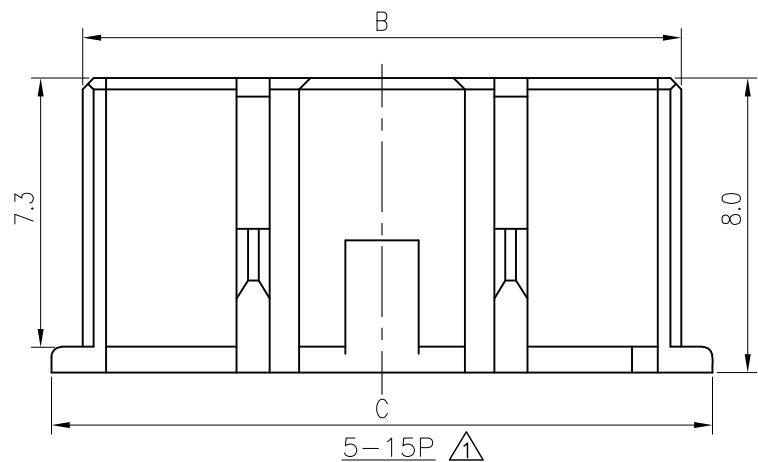
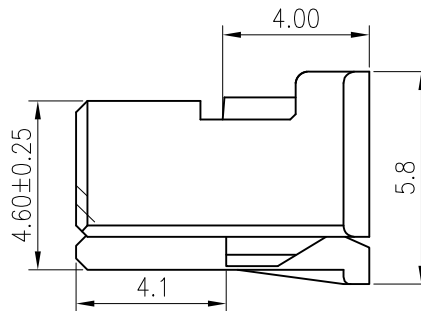
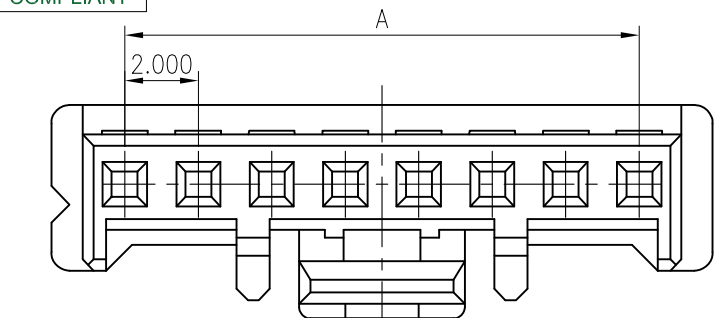
Ordering Code:

H20140 *** 01 01A

No. of Circuits

102:2, 115:15

Circuits	Dimensions				
	A	B	C	D	E
2	2.00	4.3	6.0	2.6	6.4
3	4.00	6.3	8.0	3.6	6.4
4	6.00	8.3	10.0	4.5	8.4
5	8.00	10.3	12.0	4.5	7.9
6	10.00	12.3	14.0	4.5	7.9
7	12.00	14.3	16.0	4.5	7.9
8	14.00	16.3	18.0	4.5	7.9
9	16.00	18.3	20.0	4.5	7.9
10	18.00	20.3	22.0	11.0	14.5
11	20.00	22.3	24.0	11.0	14.5
12	22.00	24.3	26.0	11.0	14.5
13	24.00	26.3	28.0	11.0	14.5
14	26.00	28.3	30.0	11.0	14.5
15	28.00	30.3	32.0	11.0	14.5



MARK	REVISION DESCRIPTION	SIGNATURE	DATE
A4			
A3	Modify Dimension	Arvin	2022.08.19
A2	Change the part number and frame format	Arvin	2020.05.07

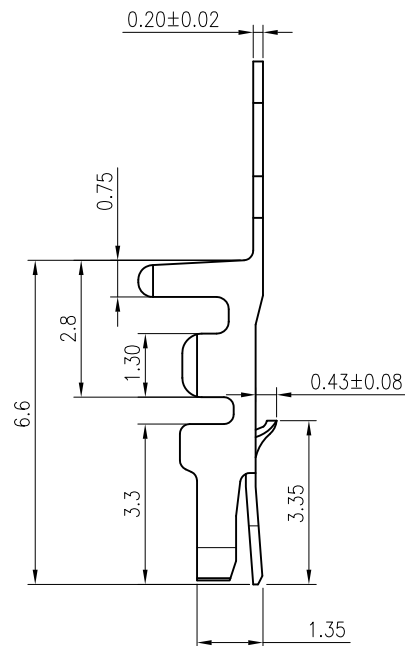
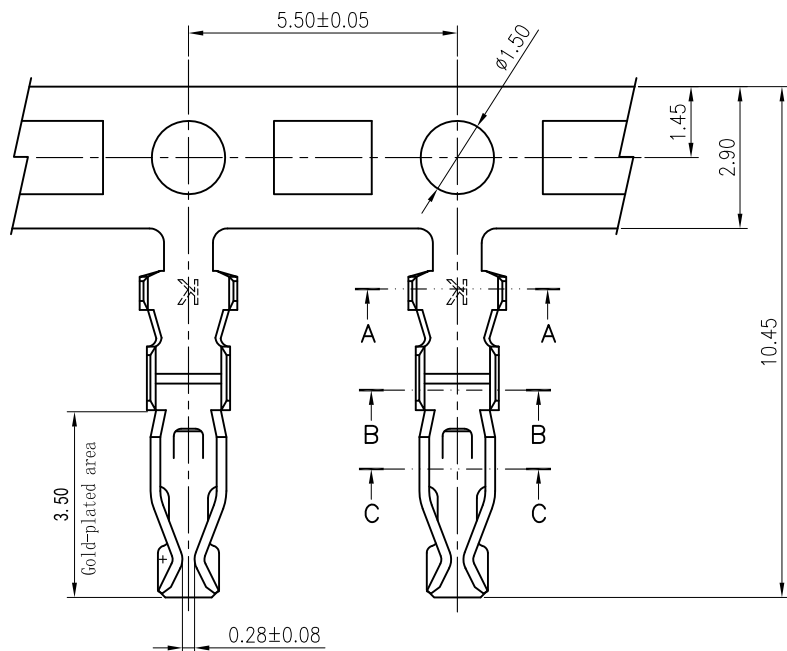
TOLERANCE
 X.X ±0.30
 X.XX ±0.20
 X.XXX ±0.10
 Angle ±2°

TITLE: PA2.0 Housing
 UNIT:mm SCALE:N/A

DRAWN: Arvin 2020.05.07
 CHECKED:
 APPROVED:
 SHEET: 1/1 PROJECTION

KONNRA 东莞市康瑞电子有限公司
 DongGuan Konnra Electronics CO.,LTD
 PART NO.: H20140***0101A
 VER.: A3 DRAWING NO.: 2014H101-A-S

RoHS
COMPLIANT



SPECIFICATIONS

1. Current rating: 3A AC, DC
2. Voltage rating: 250V AC, DC
3. Temperature range: -40°C ~ +105°C
4. Insulation resistance: 1000MΩ/ min.
5. Withstanding voltage: 800V AC/ minute.
6. Contact resistance: 20mΩ/ max.

Material: Phosphor Bronze

Plating: Tin plated over nickel

Applicable wire:

Conductor size: AWG#24~#28

Insulation O.D.: 0.9~1.40mm

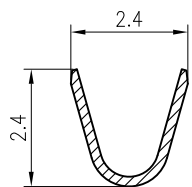
Suitable: KR2005/KR2014 series Housing

Q'ty/reel: 10,000pcs

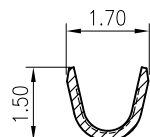
Ordering Code:

T20050P***01A

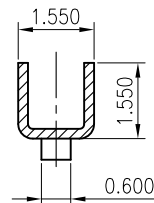
- S00: Nnplated
- T01: Bright tin
- B04: Au 5u"
- B08: Au 2u"



SECTION A-A



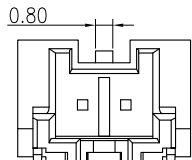
SECTION B-B



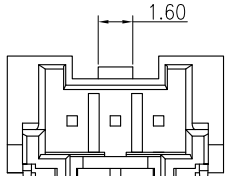
SECTION C-C

F		Uniformly arrange the drawings	ZSZ	2021.09.22	TOLERANCE X.X ±0.3 X.XX ±0.2 X.XXX ±0.1 Angle ±2°	TITLE: PHD/PA2.0 Terminal	DRAWN: ZSZ 2021.09.22		KONNRA 东莞市康瑞电子有限公司			
		Change the part number and frame format	TLX	2020.05.14			CHECKED:		DongGuan Konnra Electronics Co.,Ltd.			
	MARK		REVISION DESCRIPTION	SIGNATURE			DATE	APPROVED:		PART NO.: T20050P***01A		
	1	2	3	4			5	6	7	8	9	
					UNIT:mm	SCALE:N/A	SHEET:1/1	PROJECTION	REV.:A3	DRAWING NO.:2005T01-A-S		

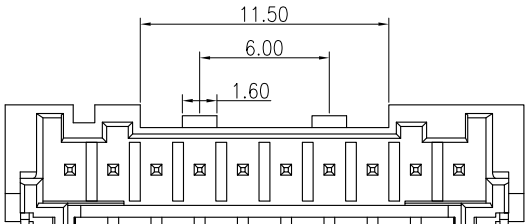
RoHS
COMPLIANT



2P View



3P View



10-15P Two Buckle View

◆ SPECIFICATIONS

- Current rating: 3A (AWG #24)AC, DC
- Voltage rating: 250V AC,DC
- Temperature range: -40°C ~ +105°C
- Insulation resistance: 1000MΩ Min.
- Withstanding voltage: 800V AC/ minute.
- Contact resistance: 20mΩ Max.

Material:

Insulator: Nylon 9T UL 94V-0

Pin: Brass

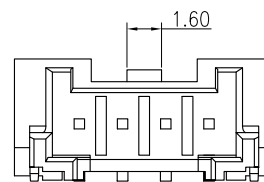
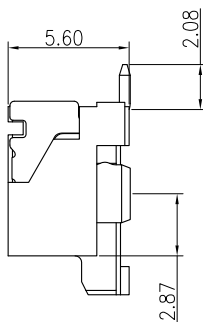
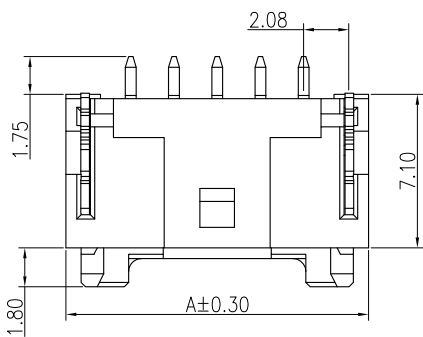
Plating: Tin plated over Nickel

Suitable: KR2014 series Housing

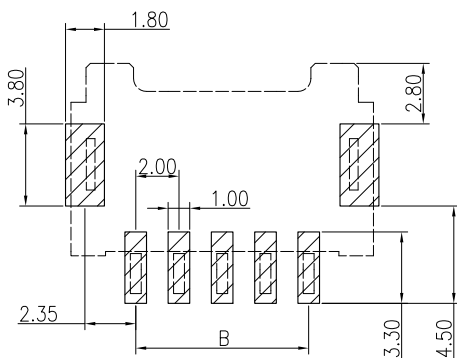
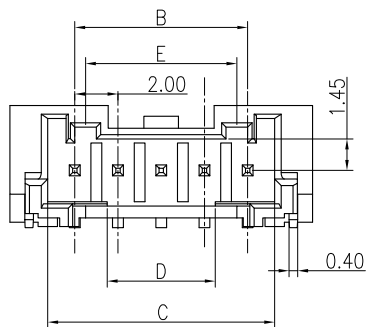
PART NO: C2014RS1**11M0102RA

02: 2P
16: 16P
11: PA9T NATURAL
M01: Matte Tin

R: REEL
P: BAG



4P View



Recommended P.C.B. Layout
Total tolerance: ±0.05mm

15P	34.00	28.00	30.50	23.00	13.60
14P	32.00	26.00	28.50	21.00	13.60
13P	30.00	24.00	26.50	19.00	13.60
12P	28.00	22.00	24.50	17.00	13.60
11P	26.00	20.00	22.50	15.00	13.60
10P	24.00	18.00	20.50	13.00	13.60
9P	22.00	16.00	18.50	11.00	7.00
8P	20.00	14.00	16.50	9.00	7.00
7P	18.00	12.00	14.50	7.00	7.00
6P	16.00	10.00	12.50	5.00	7.00
5P	14.00	8.00	10.50	5.00	7.00
4P	12.00	6.00	8.50	5.00	—
3P	10.00	4.00	6.50	1.00	—
2P	8.00	2.00	4.50	—	—
PIN	A	B	C	D	E

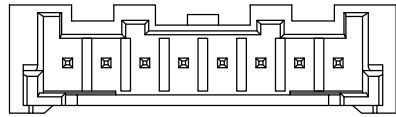
MARK	REVISION	DESCRIPTION	SIGNATURE	DATE
A3	1	Uniformly arrange the drawings	Shen	2021.9.23
A2	2	Change the part number and frame format	Ru yi	2020.3.10

TOLERANCE	TITLE:
X.X ±0.30	PA2.0 SMT 90° WF B TYPE
X.XX ±0.25	
X.XXX ±0.10	
Angle ±2°	
UNIT:mm	SCALE:1/1

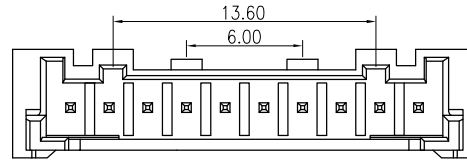
DRAWN: Shen 2021.09.23
CHECKED:
APPROVED:
SHEET:1/1
PROJECTION

KONNRA 东莞市康瑞电子有限公司 DongGuan Konnra Electronics Co.,Ltd.	
PART NO.: C2014RS1**11M0102*A	
REV.:A3	DRAWING NO.:2014WFHS01-A-S

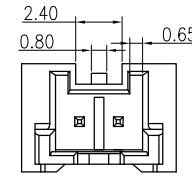
RoHS
COMPLIANT



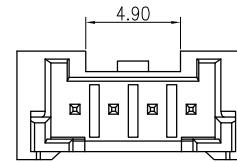
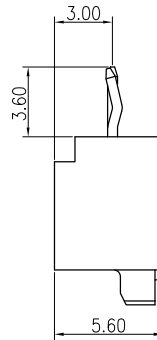
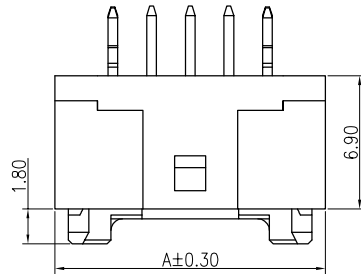
8P View



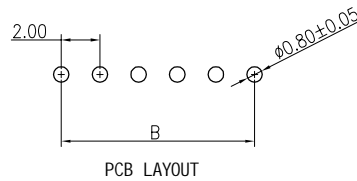
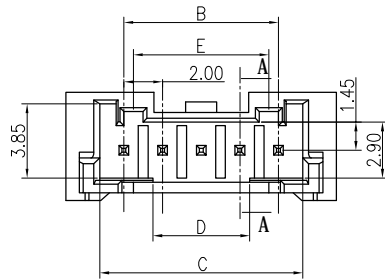
10P-15P View



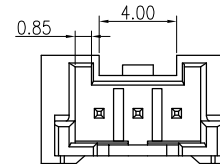
2P View



4P View



PCB LAYOUT



3P View

◆ SPECIFICATIONS

- Current rating: 3A (AWG #24)AC, DC
- Voltage rating: 250V AC,DC
- Temperature range: -40°C ~ +105°C
- Insulation resistance: 1000MΩ Min.
- Withstanding voltage: 800V AC/ minute.
- Contact resistance: 20mΩ Max.

Material:

Insulator: Nylon 9T UL 94V-0

Pin: Brass

Plating: Tin plated over Nickel

Suitable: KR2014 series Housing

Ordering Code:

C2014VD 1** 11 M01 03 P A

102: 2P

115: 15P



11: PA9T Natural

P: Bag
M01: Tin Plating

15P	34.00	28.00	30.50	23.00	13.60
14P	32.00	26.00	28.50	21.00	13.60
13P	30.00	24.00	26.50	19.00	13.60
12P	28.00	22.00	24.50	17.00	13.60
11P	26.00	20.00	22.50	15.00	13.60
10P	24.00	18.00	20.50	13.00	13.60
9P	22.00	16.00	18.50	11.00	7.00
8P	20.00	14.00	16.50	9.00	7.00
7P	18.00	12.00	14.50	7.00	7.00
6P	16.00	10.00	12.50	5.00	7.00
5P	14.00	8.00	10.50	5.00	7.00
4P	12.00	6.00	8.50	5.00	---
3P	10.00	4.00	6.50	1.00	---
2P	8.00	2.00	4.50	---	---
PIN	A	B	C	D	E



Correct the part number code

Arvin

2022.05.31

TOLERANCE

TITLE:
PA2.0 DIP 180° Wafer
(Non-Pillar)

DRAWN: Shen 2021.09.29

KONNRA 东莞市康瑞电子有限公司
DongGuan Konnra Electronics Co., Ltd.



Uniformly arrange the drawings

Shen

2021.09.29

X.X ±0.30
X.XX ±0.25
X.XXX ±0.10
Angle ±2°

CHECKED:



The First Issue(For ZHONG KE)

ZZN

2021.06.29

APPROVED:

PART NO.: C2014VD1**11M0103PA

MARK

REVISION DESCRIPTION

SIGNATURE

DATE

UNIT: mm SCALE: 1:1

SHEET: 1/1

PROJECTION

REV.: A3

DRAWING NO.: 2014WVFD03-A-S

1

2

3

4

5

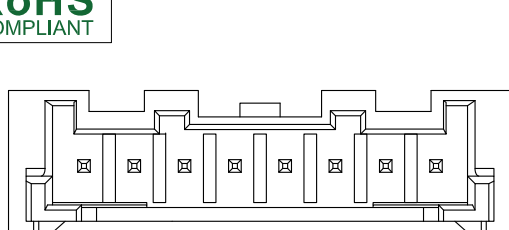
6

7

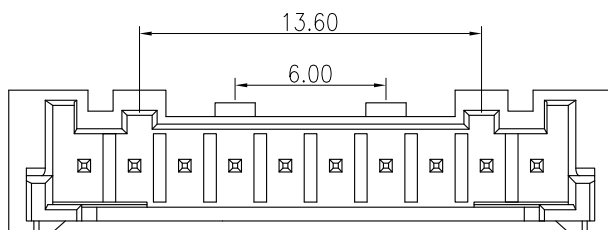
8

9

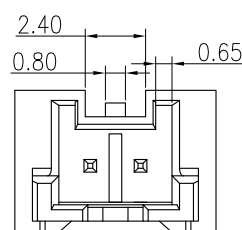
RoHS
COMPLIANT



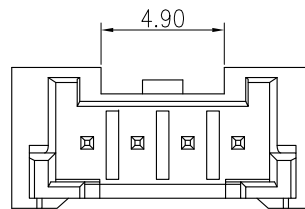
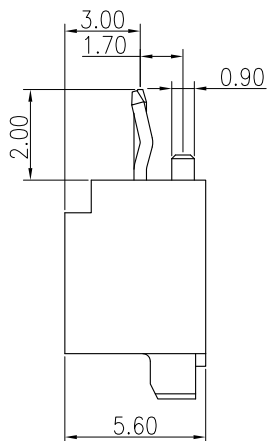
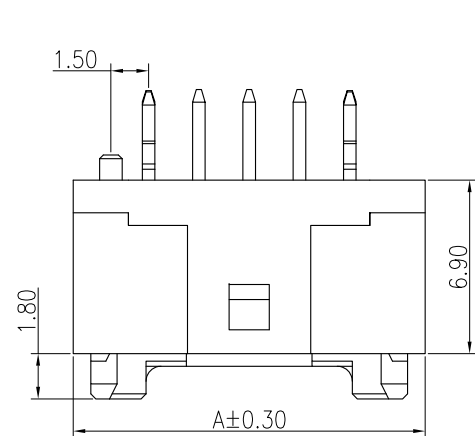
8P View



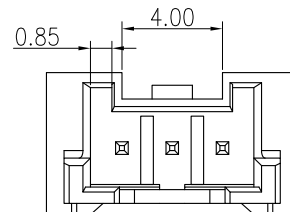
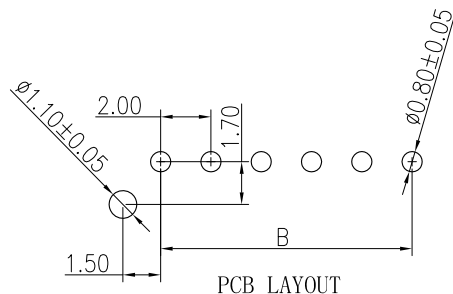
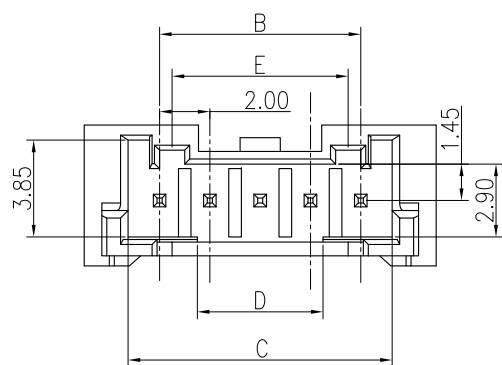
10P-15P View



2P View



4P View



3P View

◆ SPECIFICATIONS

- Current rating: 3A (AWG #24)AC, DC
- Voltage rating: 250V AC,DC
- Temperature range: -40°C ~ +105°C
- Insulation resistance: 1000MΩ Min.
- Withstanding voltage: 800V AC/ minute.
- Contact resistance: 20mΩ Max.

Material:

Insulator: Nylon 9T UL 94V-0

Pin: Brass

Plating: Tin plated over Nickel

Suitable: KR2014 series Housing

PART NO: C2014VD1**11M0102PA

02: 2P
16: 16P

P: BAG

11: PA9T Natural

M01: Matte Tin

15P	34.00	28.00	30.50	23.00	13.60
14P	32.00	26.00	28.50	21.00	13.60
13P	30.00	24.00	26.50	19.00	13.60
12P	28.00	22.00	24.50	17.00	13.60
11P	26.00	20.00	22.50	15.00	13.60
10P	24.00	18.00	20.50	13.00	13.60
9P	22.00	16.00	18.50	11.00	7.00
8P	20.00	14.00	16.50	9.00	7.00
7P	18.00	12.00	14.50	7.00	7.00
6P	16.00	10.00	12.50	5.00	7.00
5P	14.00	8.00	10.50	5.00	7.00
4P	12.00	6.00	8.50	5.00	—
3P	10.00	4.00	6.50	1.00	—
2P	8.00	2.00	4.50	—	—
PIN	A	B	C	D	E

MARK	REVISION DESCRIPTION	SIGNATURE	DATE
1			
2			
3			

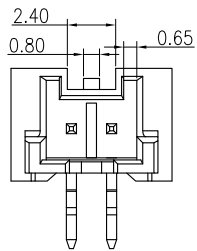
TOLERANCE
X.X ±0.30
X.XX ±0.25
X.XXX ±0.10
Angle ±2°

TITLE:
PA2.0 DIP 180° WF
Short needle 2.0
UNIT:mm
SCALE:1/1

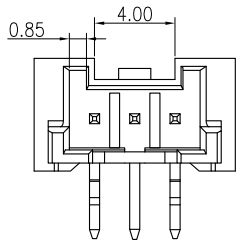
DRAWN: Shen 2021.09.23
CHECKED:
APPROVED:
SHEET:1/1
PROJECTION

KONNRA 东莞市康瑞电子有限公司	
DongGuan Konnra Electronics Co.,Ltd.	
PART NO.:C2014VD1**11M0102PA	
REV.:A3	DRAWING NO.:2014WFVD02-A-S

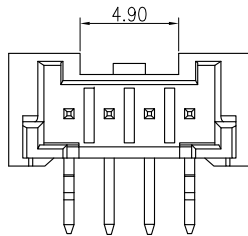
RoHS
COMPLIANT



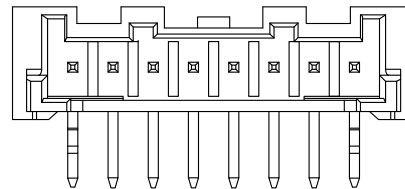
2P View



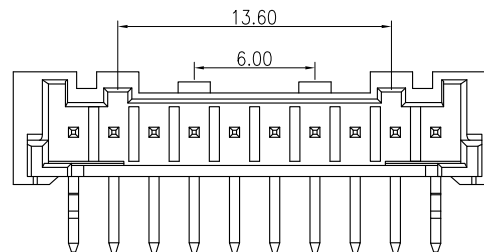
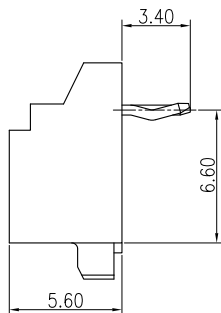
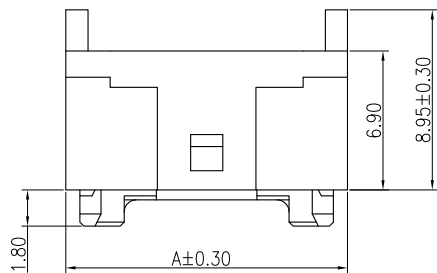
3P View



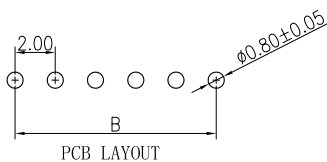
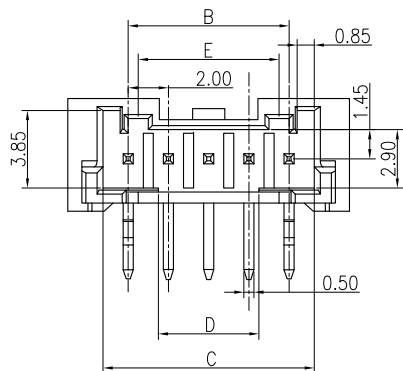
4P View



8P View



10P-15P View



◆ SPECIFICATIONS

- Current rating: 3A (AWG #24)AC, DC
- Voltage rating: 250V AC,DC
- Temperature range: -40°C ~ +105°C
- Insulation resistance: 1000MΩ Min.
- Withstanding voltage: 800V AC/ minute.
- Contact resistance: 10mΩ Max.

Material:

Insulator: Nylon 9T UL 94V-0

Pin: Brass

Plating: Tin plated over Nickel

Suitable: KR2014 series Housing

PART NO: C2014RD1**11M0101PA

02: 2P

16: 16P

PE-BAG

11: PA9T Natural

M01: Matte Tin

15P	34.00	28.00	30.50	23.00	13.60
14P	32.00	26.00	28.50	21.00	13.60
13P	30.00	24.00	26.50	19.00	13.60
12P	28.00	22.00	24.50	17.00	13.60
11P	26.00	20.00	22.50	15.00	13.60
10P	24.00	18.00	20.50	13.00	13.60
9P	22.00	16.00	18.50	11.00	7.00
8P	20.00	14.00	16.50	9.00	7.00
7P	18.00	12.00	14.50	7.00	7.00
6P	16.00	10.00	12.50	5.00	7.00
5P	14.00	8.00	10.50	5.00	7.00
4P	12.00	6.00	8.50	5.00	—
3P	10.00	4.00	6.50	1.00	—
2P	8.00	2.00	4.50	—	—
PIN	A	B	C	D	E

MARK	REVISION DESCRIPTION	SIGNATURE	DATE
A3	Uniformly arrange the drawings	Shen	2021.9.23
A2	Change the part number and frame format	Ru yi	2020.3.10

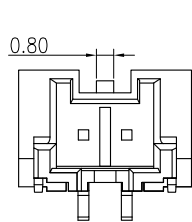
TOLERANCE
X.X ±0.30
X.XX ±0.25
X.XXX ±0.10
Angle ±2°

TITLE:
PA2.0 DIP 90° WF
UNIT:mm
SCALE:1/1

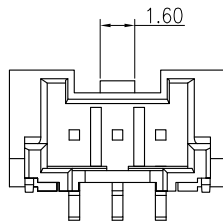
DRAWN: Shen 2021.09.23
CHECKED:
APPROVED:
SHEET:1/1
PROJECTION

KONNRA 东莞市康瑞电子有限公司 DongGuan Konnra Electronics Co.,Ltd.
PART NO.:C2014RD1**11M0101PA
REV.:A3
DRAWING NO.:2014WFHD01-A-S

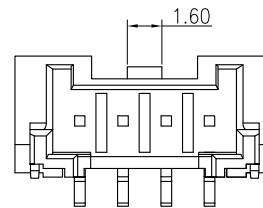
RoHS
COMPLIANT



2P View



3P View



4P View

◆SPECIFICATIONS

- Current rating: 3A (AWG #24)AC, DC
- Voltage rating: 250V AC,DC
- Temperature range: -40°C ~ +105°C
- Insulation resistance:1000MΩ Min.
- Withstanding voltage: 800V AC/ minute.
- Contact resistance: 20mΩ Max.

Material:

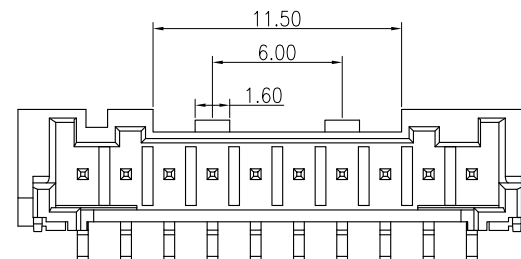
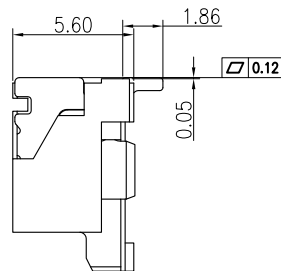
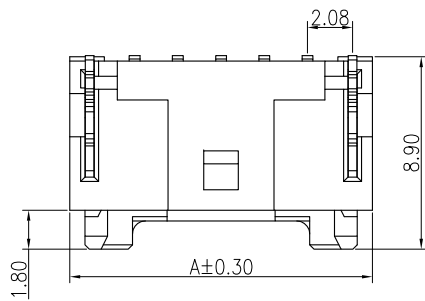
Insulator: Nylon 9T UL 94V-0
Pin: Brass

Plating: Tin plated over Nickel
Suitable: KR2014 series Housing

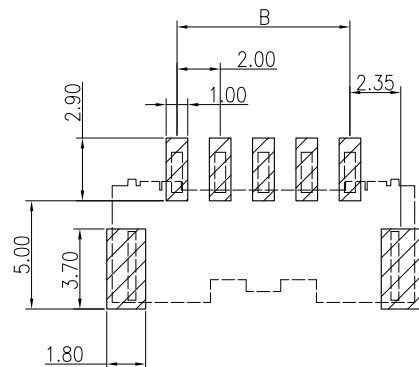
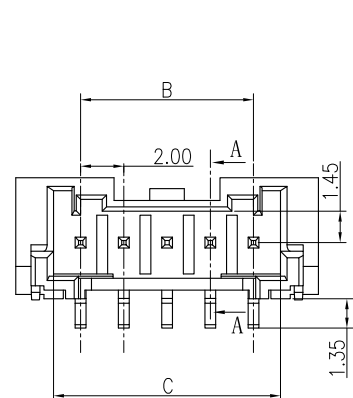
PART NO: C2014VS ***11M0101RA

102: 2P
116: 16P
11: PA9T Natural
M01: Matte Tin

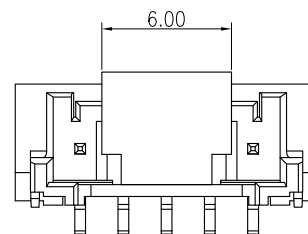
R: REEL



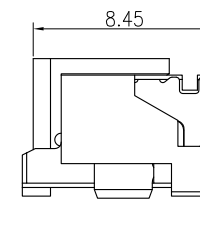
10-15P Two Buckle View



Recommended P.C.B. Layout
Total tolerance:±0.05mm



CAP VIEW



15P	34.00	28.00	30.50
14P	32.00	26.00	28.50
13P	30.00	24.00	26.50
12P	28.00	22.00	24.50
11P	26.00	20.00	22.50
10P	24.00	18.00	20.50
9P	22.00	16.00	18.50
8P	20.00	14.00	16.50
7P	18.00	12.00	14.50
6P	16.00	10.00	12.50
5P	14.00	8.00	10.50
4P	12.00	6.00	8.50
3P	10.00	4.00	6.50
2P	8.00	2.00	4.50
PIN	A	B	C

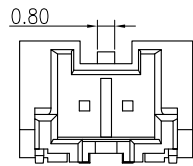
MARK	REVISION DESCRIPTION	SIGNATURE	DATE	TOLERANCE	TITLE:	DRAWN:	CHECKED:	APPROVED:	REV.:A3	DRAWING NO.:
A3	Uniformly arrange the drawings	Shen	2021.9.23	X.X ±0.30	PA2.0 SMT 180° WF	Shen 2021.09.23			A3	2014WFVS01-A-S
A2	Change the part number and frame format	Ru yi	2020.3.10	X.XX ±0.25						
				X.XXX ±0.10						
				Angle ±2°	UNIT:mm	SCALE:1/1	SHEET:1/1	PROJECTION		

KONNRA 东莞市康瑞电子有限公司
DongGuan Konnra Electronics Co.,Ltd.

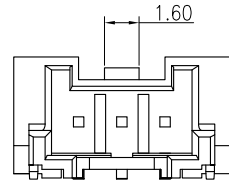
PART NO.:C2014VS***11M0101RA

REV.:A3 DRAWING NO.:2014WFVS01-A-S

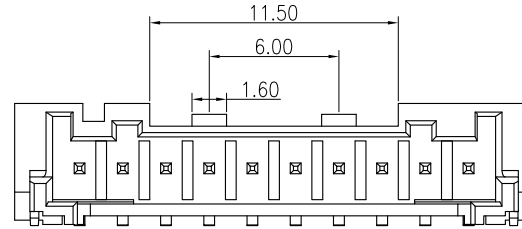
RoHS
COMPLIANT



2P View



3P View



10-15P Two Buckle View

◆SPECIFICATIONS

- Current rating: 3A (AWG #24)AC, DC
- Voltage rating: 250V AC,DC
- Temperature range: -40°C ~ +105°C
- Insulation resistance:1000MΩ Min.
- Withstanding voltage: 800V AC/ minute.
- Contact resistance: 20mΩ Max.

Material:

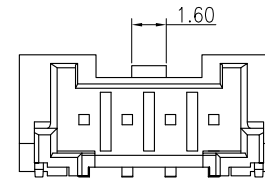
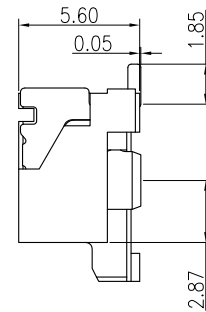
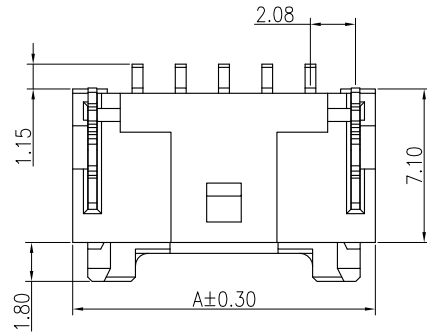
Insulator: Nylon 9T UL 94V-0
Pin: Brass

Plating: Tin plated over Nickel

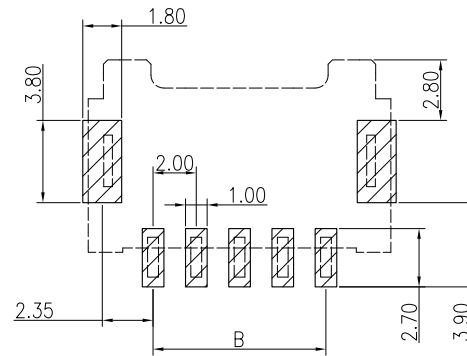
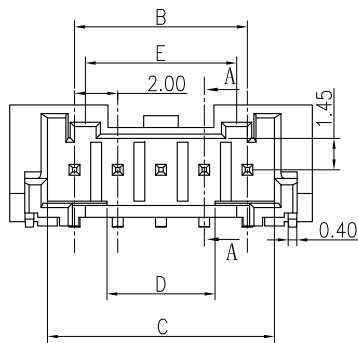
Suitable: KR2014 series Housing

PART NO: C2014RS1**11M0101RA

02: 2P
16: 16P
11: PA9T Natural
M01: Matte Tin



4P View



Recommended P.C.B. Layout
Total tolerance:±0.05mm

15P	34.00	28.00	30.50	23.00	13.60
14P	32.00	26.00	28.50	21.00	13.60
13P	30.00	24.00	26.50	19.00	13.60
12P	28.00	22.00	24.50	17.00	13.60
11P	26.00	20.00	22.50	15.00	13.60
10P	24.00	18.00	20.50	13.00	13.60
9P	22.00	16.00	18.50	11.00	7.00
8P	20.00	14.00	16.50	9.00	7.00
7P	18.00	12.00	14.50	7.00	7.00
6P	16.00	10.00	12.50	5.00	7.00
5P	14.00	8.00	10.50	5.00	7.00
4P	12.00	6.00	8.50	5.00	---
3P	10.00	4.00	6.50	1.00	---
2P	8.00	2.00	4.50	---	---
PIN	A	B	C	D	E

MARK	REVISION DESCRIPTION	SIGNATURE	DATE	TOLERANCE	TITLE:	UNIT:mm	SCALE:1/1	SHEET:1/1	PROJECTION	REV.:A3	DRAWING NO.:2014WFHS02-A-S
A3	Uniformly arrange the drawings	Shen	2021.9.23	X.X ±0.30	PA2.0 SMT 90° WF	mm	1/1	1/1	Third Angle	DRAWN: Shen 2021.09.23	DongGuan Konnra Electronics Co.,Ltd.
A2	Change the part number and frame format	Ru yi	2020.3.10	X.XX ±0.25							
				X.XXX ±0.10							
				Angle ±2°							

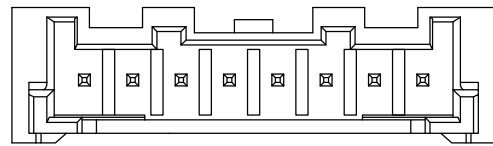
KONNRA 东莞市康瑞电子有限公司

DongGuan Konnra Electronics Co.,Ltd.

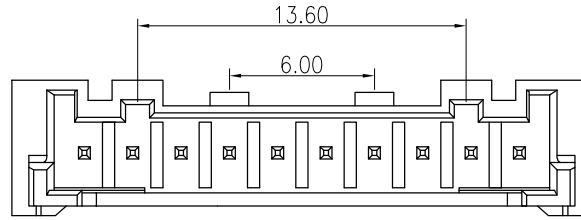
PART NO.:C2014RS1**11M0101*A

REV.:A3 DRAWING NO.:2014WFHS02-A-S

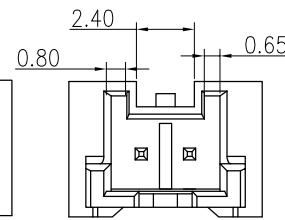
RoHS
COMPLIANT



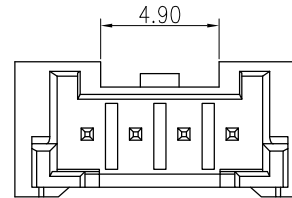
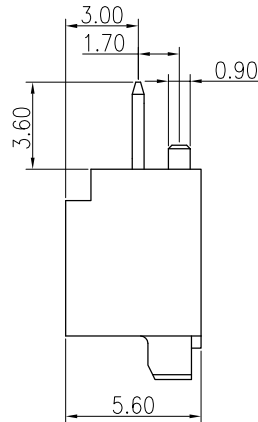
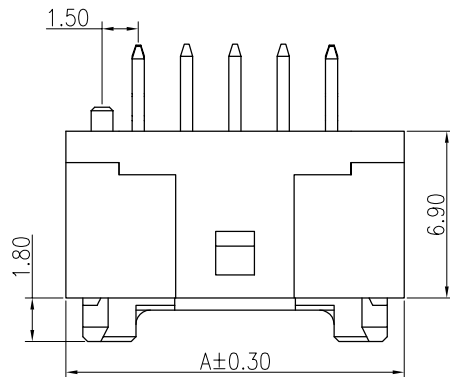
8P View



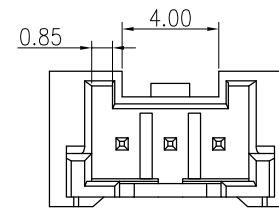
10P-15P View



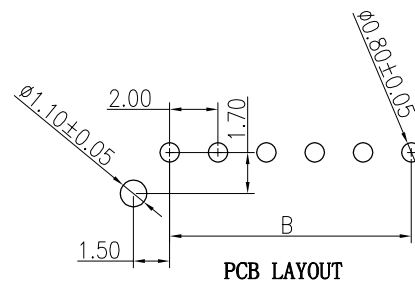
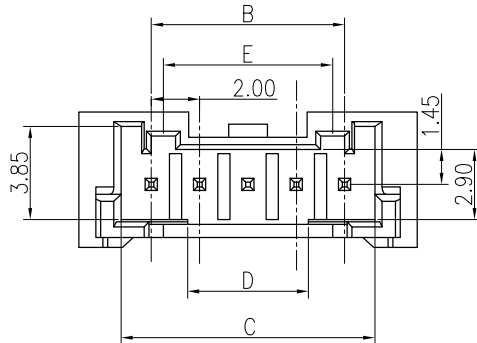
2P View



4P View



3P View



PCB LAYOUT

◆SPECIFICATIONS

- Current rating: 3A (AWG #24)AC, DC
- Voltage rating: 250V AC,DC
- Temperature range: -40°C ~ +105°C
- Insulation resistance:1000MΩ Min.
- Withstanding voltage: 800V AC/ minute.
- Contact resistance: 20mΩ Max.

Material:

Insulator: Nylon 9T UL 94V-0

Pin: Brass

Plating: Tin plated over Nickel

Suitable: KR2014 series Housing

PART NO: C2014VD1**11M0107PA

02: 2P

16: 16P

11: PA9T Natural

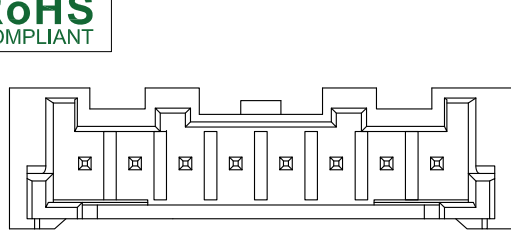
M01: Matte Tin

P: BAG

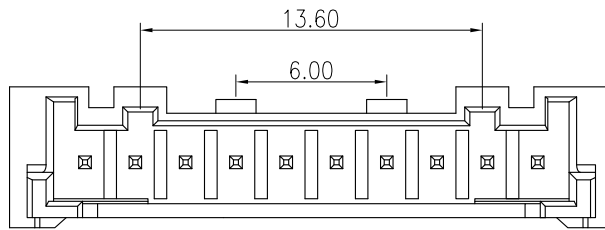
15P	34.00	28.00	30.50	23.00	13.60
14P	32.00	26.00	28.50	21.00	13.60
13P	30.00	24.00	26.50	19.00	13.60
12P	28.00	22.00	24.50	17.00	13.60
11P	26.00	20.00	22.50	15.00	13.60
10P	24.00	18.00	20.50	13.00	13.60
9P	22.00	16.00	18.50	11.00	7.00
8P	20.00	14.00	16.50	9.00	7.00
7P	18.00	12.00	14.50	7.00	7.00
6P	16.00	10.00	12.50	5.00	7.00
5P	14.00	8.00	10.50	5.00	7.00
4P	12.00	6.00	8.50	5.00	---
3P	10.00	4.00	6.50	1.00	---
2P	8.00	2.00	4.50	---	---
PIN	A	B	C	D	E

F					TOLERANCE	TITLE:	DRAWN: 3S3 2022.03.03	KONNRA 东莞市康瑞电子有限公司	
					X.X ±0.30	PA2.0 DIP 180° WF	CHECKED:	DongGuan Konnra Electronics Co.,Ltd.	
					X.XX ±0.25	No K	APPROVED:	PART NO.: C2014VD1**11M0107PA	
	MARK	REVISION DESCRIPTION	SIGNATURE	DATE	X.XXX ±0.10	Angle ±2°	UNIT:mm SCALE:1/1	SHEET:1/1	PROJECTION
	1	2	3	4	5	6	7	8	9

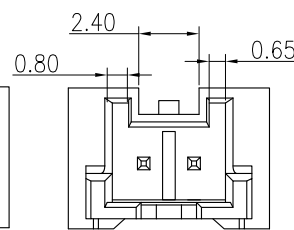
RoHS
COMPLIANT



8P View



10P-15P View



2P View

◆ SPECIFICATIONS

- Current rating: 3A (AWG #24)AC, DC
- Voltage rating: 250V AC,DC
- Temperature range: -40°C ~ +105°C
- Insulation resistance: 1000MΩ Min.
- Withstanding voltage: 800V AC/ minute.
- Contact resistance: 20mΩ Max.

Material:

Insulator: Nylon 9T UL 94V-0

Pin: Brass

Plating: Tin plated over Nickel

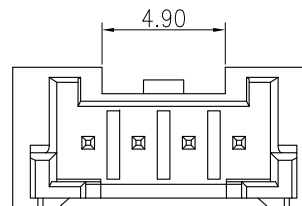
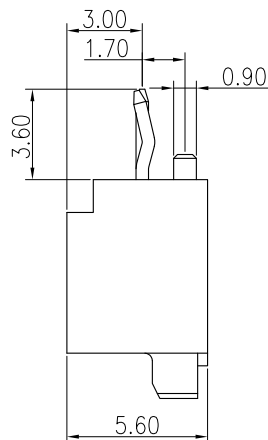
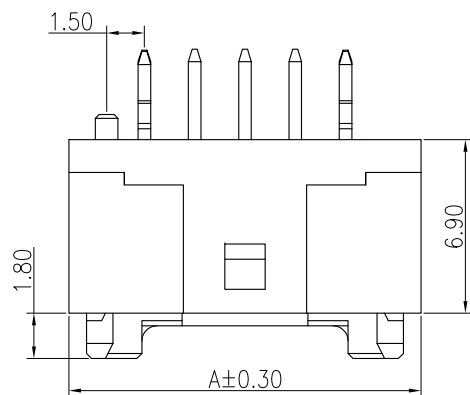
Suitable: KR2014 series Housing

PART NO: C2014VD1**11M0101PA

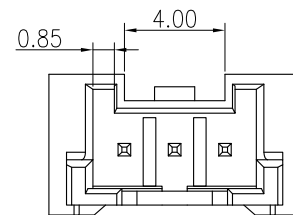
02: 2P P: BAG
16: 16P

11: PA9T Natural

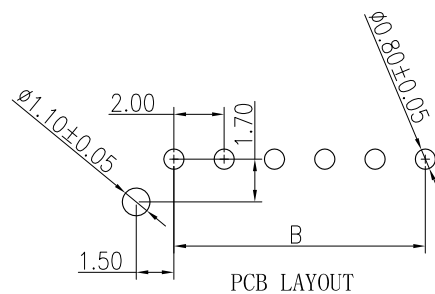
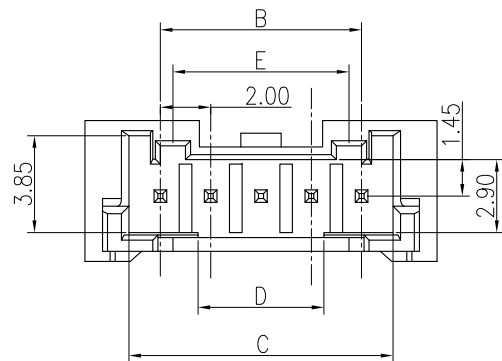
M01: Matte Tin



4P View



3P View



15P	34.00	28.00	30.50	23.00	13.60
14P	32.00	26.00	28.50	21.00	13.60
13P	30.00	24.00	26.50	19.00	13.60
12P	28.00	22.00	24.50	17.00	13.60
11P	26.00	20.00	22.50	15.00	13.60
10P	24.00	18.00	20.50	13.00	13.60
9P	22.00	16.00	18.50	11.00	7.00
8P	20.00	14.00	16.50	9.00	7.00
7P	18.00	12.00	14.50	7.00	7.00
6P	16.00	10.00	12.50	5.00	7.00
5P	14.00	8.00	10.50	5.00	7.00
4P	12.00	6.00	8.50	5.00	—
3P	10.00	4.00	6.50	1.00	—
2P	8.00	2.00	4.50	—	—
PIN	A	B	C	D	E

MARK	REVISION DESCRIPTION	SIGNATURE	DATE
1			
2			
3			

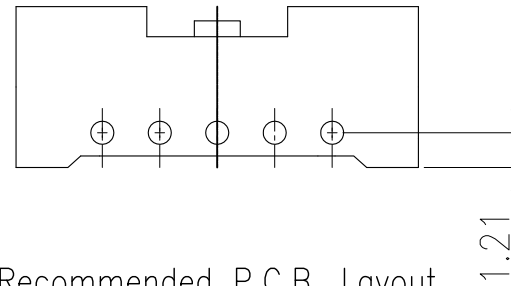
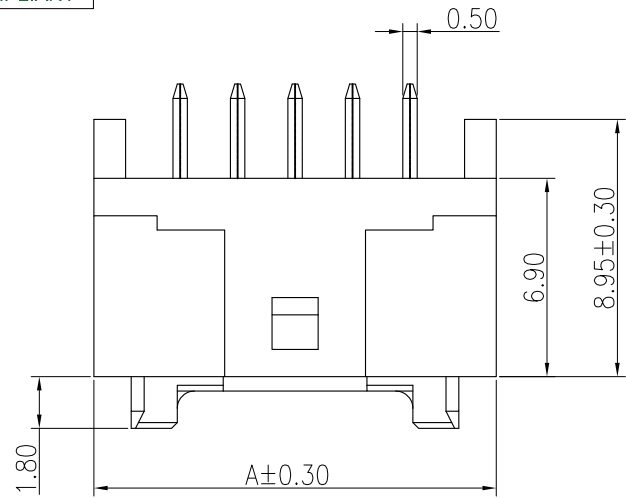
TOLERANCE
X.X ±0.30
X.XX ±0.25
X.XXX ±0.10
Angle ±2°

TITLE:
PA2.0 DIP 180° WF
UNIT:mm
SCALE:1/1

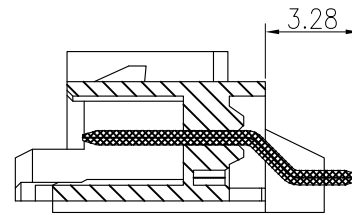
DRAWN: Shen 2021.09.23
CHECKED:
APPROVED:
SHEET:1/1
PROJECTION

KONNRA 东莞市康瑞电子有限公司 DongGuan Konnra Electronics Co.,Ltd.	
PART NO.: C2014VD1**11M0101PA	
REV.:A3	DRAWING NO.:2014WFVD01-A-S

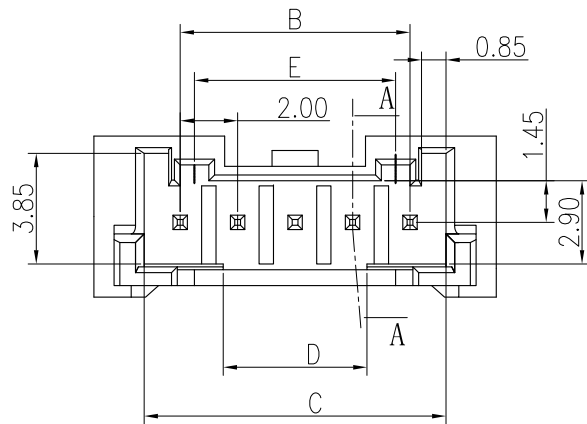
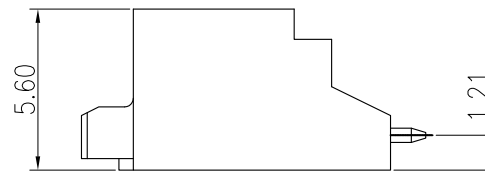
RoHS
COMPLIANT



Recommended P.C.B. Layout
Total tolerance: ±0.05mm



SECTION:A-A



◆SPECIFICATIONS

- Current rating: 3A (AWG #24)AC, DC
- Voltage rating: 250V AC,DC
- Temperature range: -40°C ~ +105°C
- Insulation resistance:1000MΩ Min.
- Withstanding voltage: 800V AC/ minute.
- Contact resistance: 20mΩ Max.

Material:

Insulator: Nylon 9T UL 94V-0
Pin: Brass

Plating: Tin plated over Nickel
Suitable: KR2014 series Housing

PART NO: C2014VD1**11M0106PA

02: 2P
16: 16P
11:PA9T Natural
M01: Matte Tin
P: BAG

15P	34.00	28.00	30.50	23.00	13.60
14P	32.00	26.00	28.50	21.00	13.60
13P	30.00	24.00	26.50	19.00	13.60
12P	28.00	22.00	24.50	17.00	13.60
11P	26.00	20.00	22.50	15.00	13.60
10P	24.00	18.00	20.50	13.00	13.60
9P	22.00	16.00	18.50	11.00	7.00
8P	20.00	14.00	16.50	9.00	7.00
7P	18.00	12.00	14.50	7.00	7.00
6P	16.00	10.00	12.50	5.00	7.00
5P	14.00	8.00	10.50	5.00	7.00
4P	12.00	6.00	8.50	5.00	—
3P	10.00	4.00	6.50	1.00	—
2P	8.00	2.00	4.50	—	—
PIN数	A	B	C	D	E

A3

A2

A1

MARK

Add Product Type

REVISION DESCRIPTION

SIGNATURE

DATE

TOLERANCE

X.X ±0.30

X.XX ±0.25

X.XXX ±0.10

Angle ±2°

TITLE:

PA2.0 DIP 180° WF
_TYPE 6

UNIT:mm

SCALE:N/A

DRAWN:

33/2021.11.15

CHECKED:

APPROVED:

SHEET:1/1

PROJECTION

KONNRA 东莞市康瑞电子有限公司

DongGuan Konnra Electronics Co.,Ltd.

PART NO.:C2014VD1**11M0106PA

REV.:A1

DRAWING NO.:2014WFVD106-A-S

1

2

3

4

5

6

7

8

9

RoHS
COMPLIANT

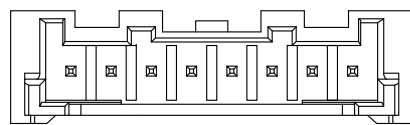
SPECIFICATIONS

1. Current rating: 3A (AWG #24)AC, DC
2. Voltage rating: 250V AC,DC
3. Temperature range: -40°C ~ +105°C
4. Insulation resistance: 1000MΩ Min.
5. Withstanding voltage: 800V AC/ minute.
6. Contact resistance: 20mΩ Max.

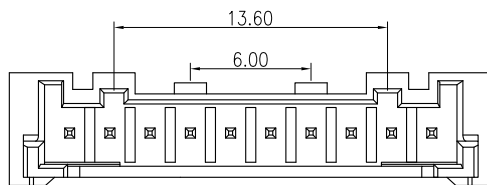
Material:

Insulator: High temperature plastics UL 94V-0
Pin: Brass
Plating: Tin plated over Nickel
Suitable: KR2014 series Housing

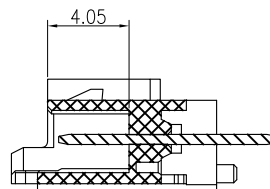
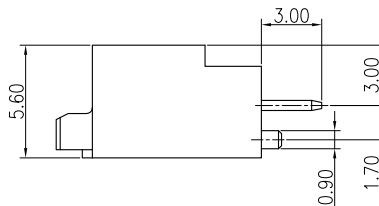
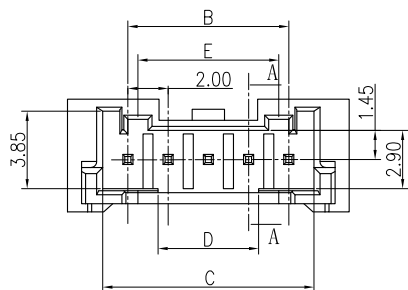
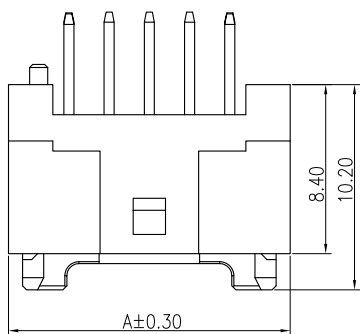
PART NO: C2014VD1** **M0105PA
02: 2P P: BAG
16: 16P
13: LCP Natural
48: PA10T Natural
M01: Matte Tin



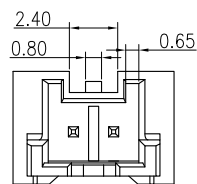
8P View



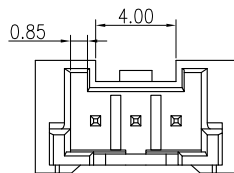
10P-15P View



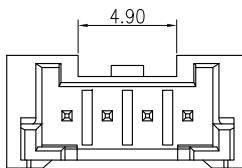
SECTION A-A
SCALE 1:1



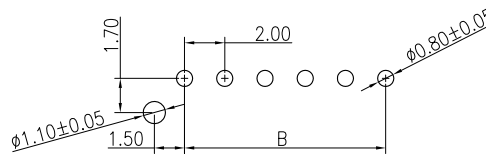
2P View



3P View



4P View



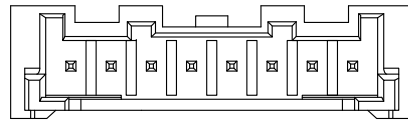
PCB LAYOUT
TOTAL TOLERANCE: ±0.05mm

15P	34.00	28.00	30.50	23.00	13.60
14P	32.00	26.00	28.50	21.00	13.60
13P	30.00	24.00	26.50	19.00	13.60
12P	28.00	22.00	24.50	17.00	13.60
11P	26.00	20.00	22.50	15.00	13.60
10P	24.00	18.00	20.50	13.00	13.60
9P	22.00	16.00	18.50	11.00	7.00
8P	20.00	14.00	16.50	9.00	7.00
7P	18.00	12.00	14.50	7.00	7.00
6P	16.00	10.00	12.50	5.00	7.00
5P	14.00	8.00	10.50	5.00	7.00
4P	12.00	6.00	8.50	5.00	—
3P	10.00	4.00	6.50	1.00	—
2P	8.00	2.00	4.50	—	—
PIN	A	B	C	D	E

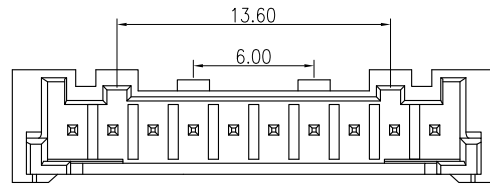
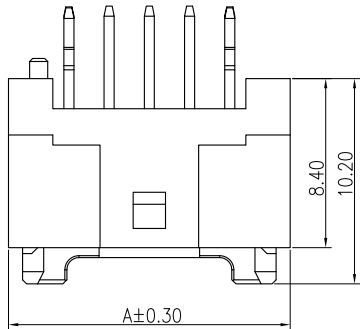
A3				TOLERANCE	TITLE:	DRAWN: Arvin 2021.10.29	KONNRA 东莞市康瑞电子有限公司 DongGuan Konnra Electronics Co.,Ltd.
A2				X.X ±0.30	PA2.0 DIP 180° WF H=10.20 No K	CHECKED:	
A1	New Specification	Arvin	2021.10.29	X.XX ±0.25		APPROVED:	

MARK	REVISION DESCRIPTION	SIGNATURE	DATE	Angle ±2°	UNIT:mm	SCALE: 1/1	SHEET: 1/1	PROJECTION	REV.: A1	DRAWING NO.: 2014WFVD105-A-S
------	----------------------	-----------	------	-----------	---------	------------	------------	------------	----------	------------------------------

RoHS
COMPLIANT



8P View



10P-15P View

◆SPECIFICATIONS

- Current rating: 3A (AWG #24)AC, DC
- Voltage rating: 250V AC,DC
- Temperature range: -40°C ~ +105°C
- Insulation resistance:1000MΩ Min.
- Withstanding voltage: 800V AC/ minute.
- Contact resistance: 20m Ω Max.

Material:

Insulator: High temperature plastics UL 94V-0

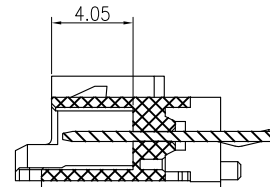
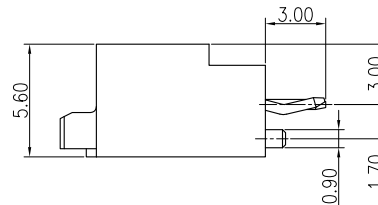
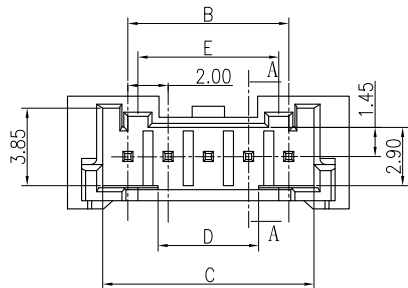
Pin: Brass

Plating: Tin plated over Nickel

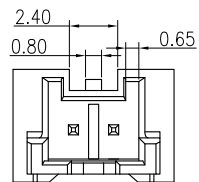
Suitable: KR2014 series Housing

PART NO: C2014VD1** **M0104PA

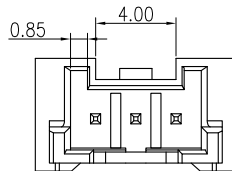
02: 2P P: BAG
16: 16P
13: LCP Natural
48: PA10T Natural
M01: Matte Tin



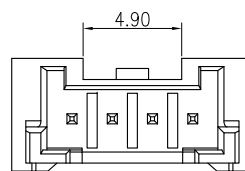
SECTION A-A
SCALE 1:1



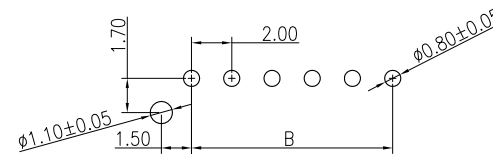
2P View



3P View



4P View



PCB LAYOUT
TOTAL TOLERANCE: ±0.05mm

15P	34.00	28.00	30.50	23.00	13.60
14P	32.00	26.00	28.50	21.00	13.60
13P	30.00	24.00	26.50	19.00	13.60
12P	28.00	22.00	24.50	17.00	13.60
11P	26.00	20.00	22.50	15.00	13.60
10P	24.00	18.00	20.50	13.00	13.60
9P	22.00	16.00	18.50	11.00	7.00
8P	20.00	14.00	16.50	9.00	7.00
7P	18.00	12.00	14.50	7.00	7.00
6P	16.00	10.00	12.50	5.00	7.00
5P	14.00	8.00	10.50	5.00	7.00
4P	12.00	6.00	8.50	5.00	—
3P	10.00	4.00	6.50	1.00	—
2P	8.00	2.00	4.50	—	—
PIN	A	B	C	D	E

A3				TOLERANCE	TITLE:	DRAWN: Shen 2021.10.12	KONNRA 东莞市康瑞电子有限公司 DongGuan Konnra Electronics Co.,Ltd.
A2				X.X ±0.30	PA2.0 DIP 180° WF H=10.20 Have K	CHECKED:	
A1	New Specification	Shen	2021.10.12	X.XX ±0.25		APPROVED:	

MARK	REVISION DESCRIPTION	SIGNATURE	DATE	X.XXX ±0.10	UNIT:mm	SCALE:1/1	SHEET:1/1	PROJECTION	REV.:A1	DRAWING NO.:2014WFVD104-A-S
------	----------------------	-----------	------	-------------	---------	-----------	-----------	------------	---------	-----------------------------

Angle ±2°
