

RoHS
COMPLIANT

◆ SPECIFICATIONS

- Current rating: 1A AC, DC
- Voltage rating: 125V AC, DC
- Temperature range: -40°C ~ +105°C
- Insulation resistance: 100MΩ Min.
- Withstanding voltage: 250V AC/ minute.
- Contact resistance: 20mΩ Max.

Material:

Insulator: PA46/PA9T/LCP UL 94V-0

Contact: Brass

Plating: Tin plated over Nickel

Circuits: 2~16

Suitable: KR1250 series Housing

Ordering Code:

C1250VD1****T0101PA

102: 2P

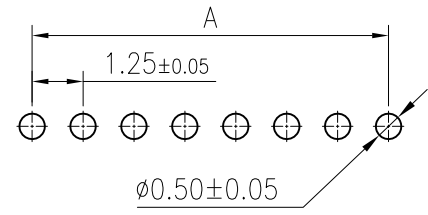
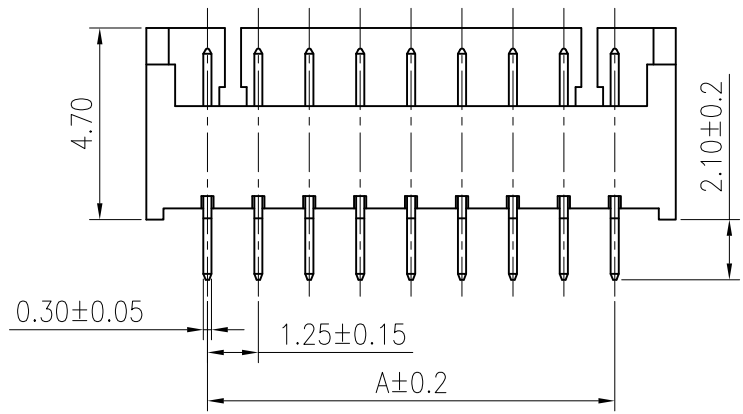
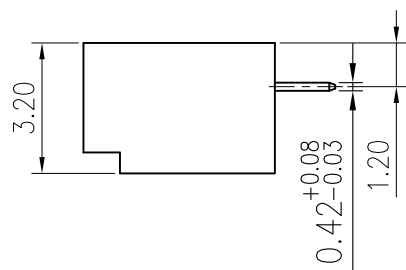
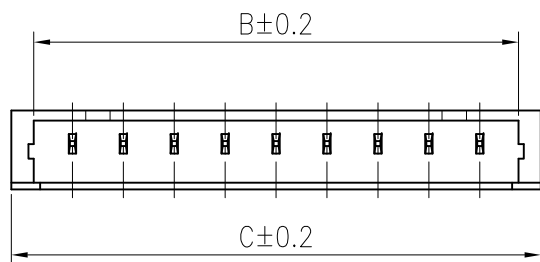
116: 16P

07: PA46 ecru

11: PA9T ecru

13: LCP ecru

P: bags



Recommended P.C.Board Layout

Cicuits	A	B	C	Cicuits	A	B	C
2	1.25	3.15	4.25	10	11.25	13.15	14.25
3	2.50	4.40	5.50	11	12.50	14.40	15.50
4	3.75	5.65	6.75	12	13.75	15.65	16.75
5	5.00	6.90	8.00	13	15.00	16.90	18.00
6	6.25	8.15	9.25	14	16.25	18.15	19.25
7	7.50	9.40	10.50	15	17.50	19.40	20.50
8	8.75	10.65	11.75	16	18.75	20.65	21.75
9	10.00	11.90	13.00				

MARK	REVISION DESCRIPTION	SIGNATURE	DATE	TOLERANCE	TITLE:	DRAWN:	CHECKED:	APPROVED:	REV.:	DRAWING NO.:
A5	Uniformly arrange the drawings	Shen	2021.08.30	X.X ±0.30	MX1.25 DIP 180°WF	Shen 2021.08.30			A5	KONNRA 东莞市康瑞电子有限公司 DongGuan Konnra Electronics Co.,Ltd. PART NO.: C1250VD1****T0101PA DRAWING NO.: 1250WVD102-A-S
A4	ADD Phosphor bronze Specification	TLX	2020.03.20	X.XX ±0.20						
				X.XXX ±0.10						
				Angle ±3°	UNIT:mm	SCALE:1/1	SHEET:1/1	PROJECTION		